

What's new in



PolyWorks

# DataLoop™ 2025

Data Management &  
Digital Connectivity  
Solutions

## Increase the quality of your dimensional inspections enterisewide

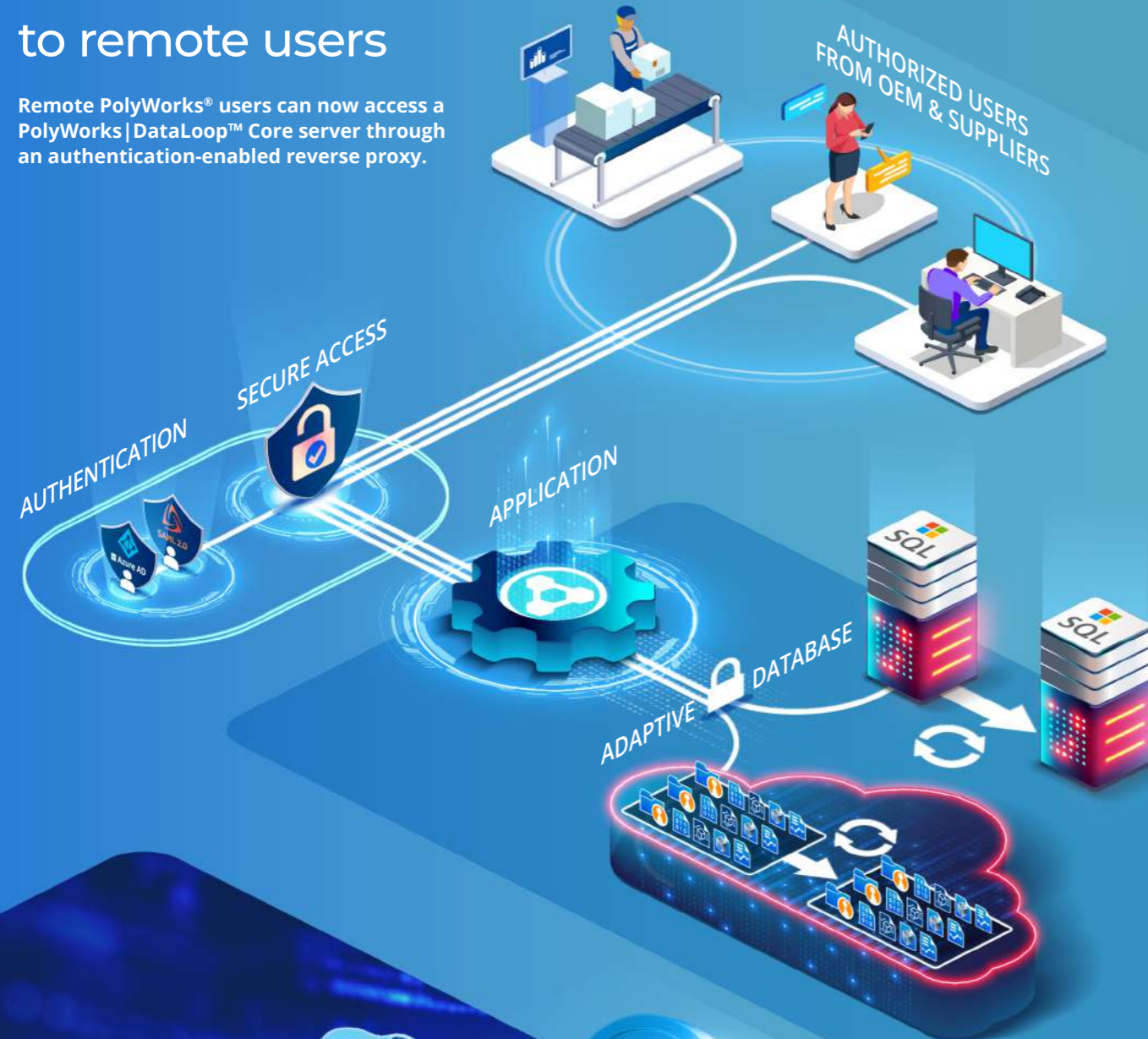
Manage and deploy your organization's best practices for metadata and measurement methodologies. Simply create and share reusable inspection project templates that embed all the right project and piece properties, measurement parameters, or any other options required to adapt to different part types, measurement hardware technologies, and fabrication processes.



innovmetric

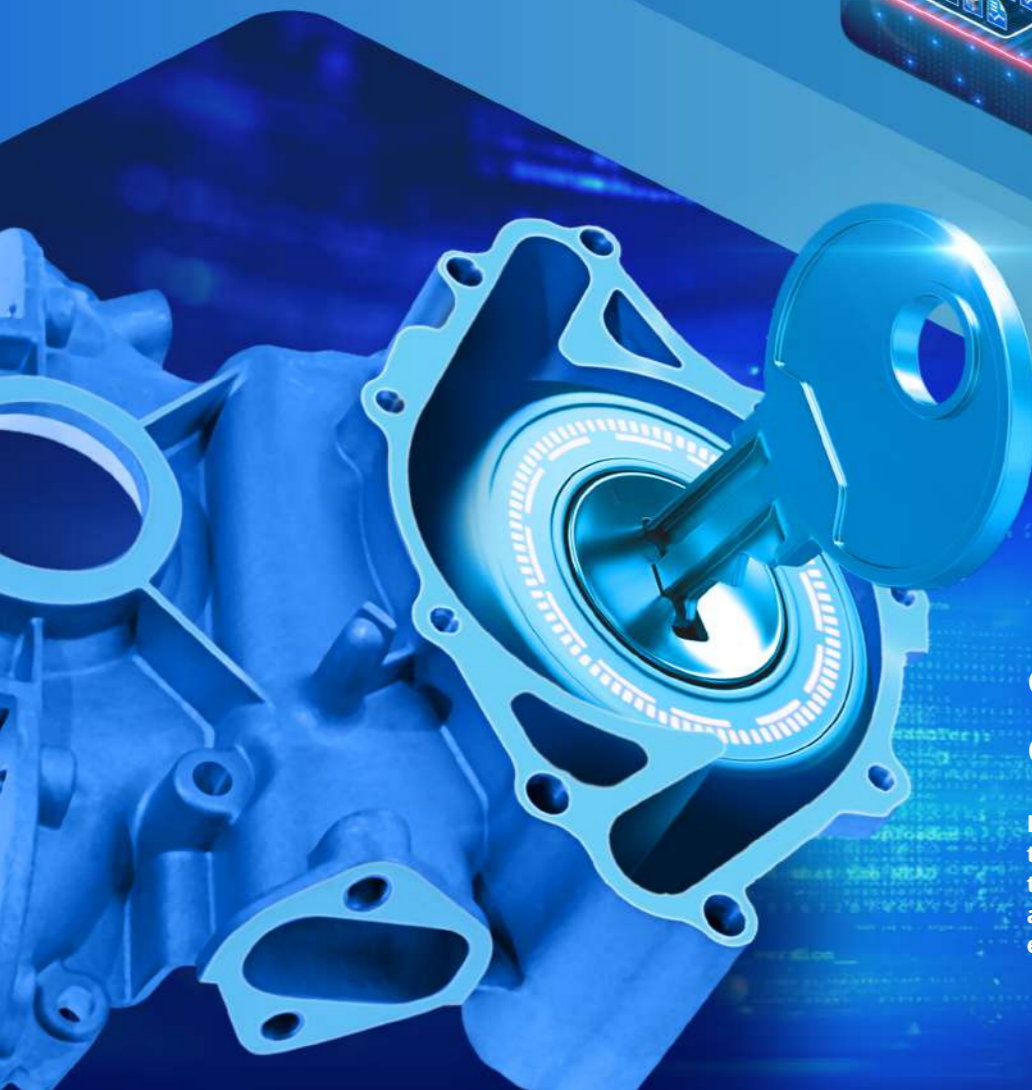
## Grant secure access to remote users

Remote PolyWorks® users can now access a PolyWorks|DataLoop™ Core server through an authentication-enabled reverse proxy.



## Prevent editing by other users

Lock a piece under your identity to modify a piece measurement template safely or to protect an important piece from being edited by others.



## Recover data deleted by mistake

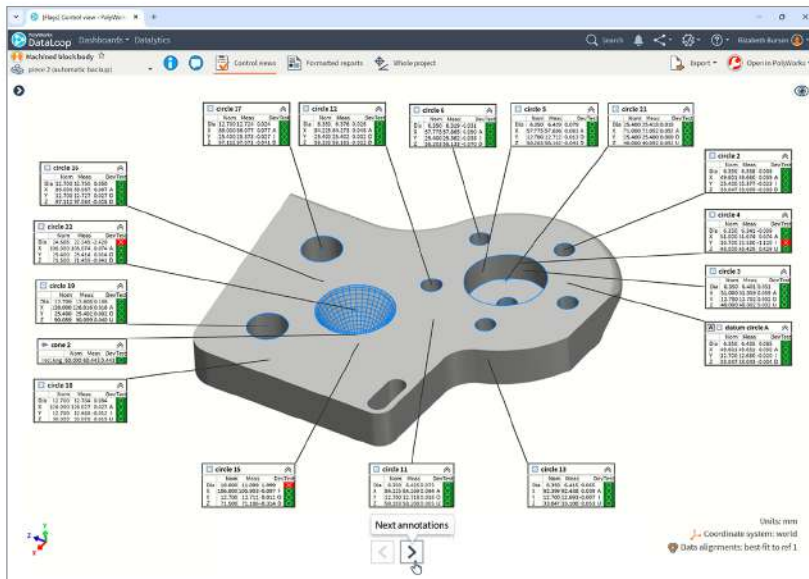
PolyWorks|DataLoop now provides access to a recycle bin, allowing users to recover deleted workspaces, projects, and pieces within 90 days of deletion.



## Allow reviewing measurement results in 3D without sharing inspection project data

Protect data confidentiality or your measurement expertise by creating and sharing view-only inspection projects that can be reviewed within the PolyWorks|DataLoop Web Interface or analyzed using PolyWorks|ReportLoop™, but cannot be opened in PolyWorks|Inspector™.

# Review object annotations more efficiently

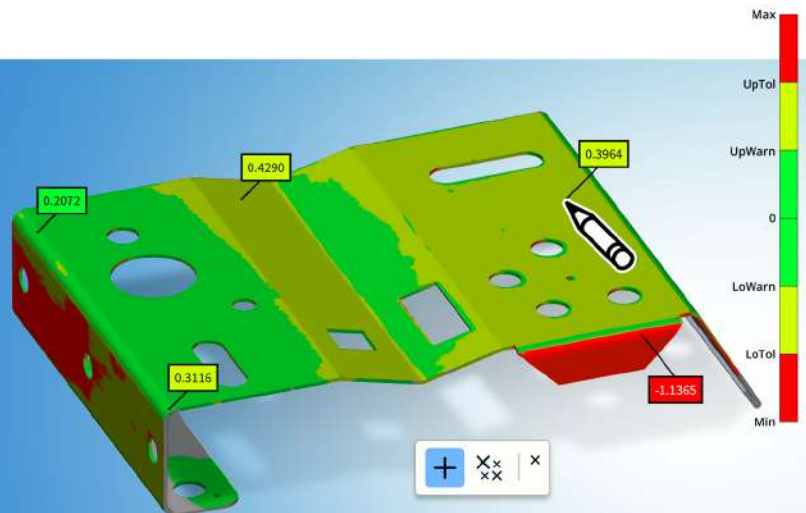


## Enjoy enhanced annotations in the PolyWorks|DataLoop Web Interface:

- ▶ Performance has been improved for projects containing a large number of annotations
- ▶ Positioning, appearance, and visibility controls are now consistent with those in PolyWorks|Inspector
- ▶ Annotations are dynamically repositioned while navigating the model
- ▶ A simple navigation tool allows viewing annotations that could not be displayed

## View deviations at specific locations

Investigate surface deviations quickly by interacting dynamically with color maps. Dynamically view deviations when mousing over color maps or click to create deviation annotations.



## Improve the piece approval process

PolyWorks|DataLoop allows you to define who can approve or reject pieces and to perform this task directly in the Web interface without opening the project in PolyWorks|Inspector.

Corporate Headquarters:

**innovmetric**

InnovMetric Software Inc.  
1-418-688-2061  
info@innovmetric.com

© 2025 InnovMetric Software Inc. All rights reserved.  
PolyWorks® is a registered trademark of InnovMetric Software Inc.  
PolyWorks|Inspector™, PolyWorks|DataLoop™, and PolyWorks|ReportLoop™ are trademarks of InnovMetric Software Inc.

Joint Venture Office:

**polyworks**  
**benelux**

**PolyWorks Benelux B.V.**

De Waal 30 Best 5684 PH Netherlands  
Contact us: +31 (40) 3020015 | info@polyworksbenelux.com  
polyworksbenelux.com